

BAIC

# BAIC New X7 Product Introduction







# Product Core Features

BAIC

Comprehensive improvement in design, technology, and experience, addressing product weaknesses, and adding comfort highlights

## Design



- ✓ Design improvement
  - Front/rear design
  - Driver/Passenger dashboard design
  - Front penetrated DRL
  - Rear logo light
- ✓ Parameters
  - Length +35mm
- ✓ New color
  - Palace red

### Interior And Exterior Design Upgrades

## Intelligence



- ✓ Infotainment system performance improvement
- ✓ Keyless entry
- ✓ ADAS features upgrade

### Intelligent Vehicle Features

## Cabin



- ✓ Premium rear row
  - Ventilation
  - Heating
  - Massage
- ✓ Seat materials improvement
  - New seat color combination
- ✓ Zero-gravity passenger seat

### Comprehensive Improvement Of Luxury Cabin

## Powertrain



- ✓ Torque+10%
- ✓ Thermal efficiency+9%
- ✓ Weight-22%
- ✓ Fuel consumption-9%

### Low Fuel Consumption With Smooth Power Output



# BAIC New X7 Preview



## BEIJING New X7

### Positioning

Family-smart SUV

### USP

#### Design

#### Cabin

#### Intelligence

#### Powertrain

### Function Configuration

- **4745\*1892\*1715**
- **Kylin Wing Grille Design**
- **Digital Lighting Matrix Design**
- Pixel BEIJING Light Source Design
- Dual Sides With Four Outlet Tail Throat Design
- Wing-shaped Wheel Hub Design
- Embraced Cabin
- **Penetrated Air Outlet**
- 5 Exterior Colors + 2 Interior Mixed Colors

- **2800mm Super Large Wheelbase**
- **1320\*850 mm The Largest Panoramic Sunroof In The Same Level**
- **“Dual Flat” Space**
- Variable Storage Space
- **Zero-gravity Passenger Seat**
- **Front/Rear Seats Ventilation/Heating/Message**
- Intelligent Dual Zone A/C
- Millionaire Level Rear Seat Experience

- Intelligent Vehicle Interconnection
- Experience Of Welcome Ceremony
- Electric Tailgate
- **Automatic Parking Assist**
- **ADAS**

- **Magic Core 1.5T “Top 10” Engine in China**
- **DCT380 China Top 10 Transmission**
- VGT Turbocharger
- Miller Circulation
- 350Bar High-pressure Injection
- 21 Noise Reduction Technologies
- **40000 hrs+ Testing**
- **100km/h Acceleration 9.87s**
- **WLTC 7.39L/100km**





01

Design

02

Cabin

03

Intelligence

04

Powertrain



BAIC

Design





# Design Highlights

BAIC

## Exterior design

### Large Size Structure of Joyful Design

- Capital Beauty Design Theme
- New Light source design
- Dual Sides With Four Outlet Tail Throat Design
- Large Size Wheel Hub

## Interior design

### Unique Interior Design

- Warm And Environmentally Friendly Cabin
- Penetrated Air Outlet
- Immersive Interactive function



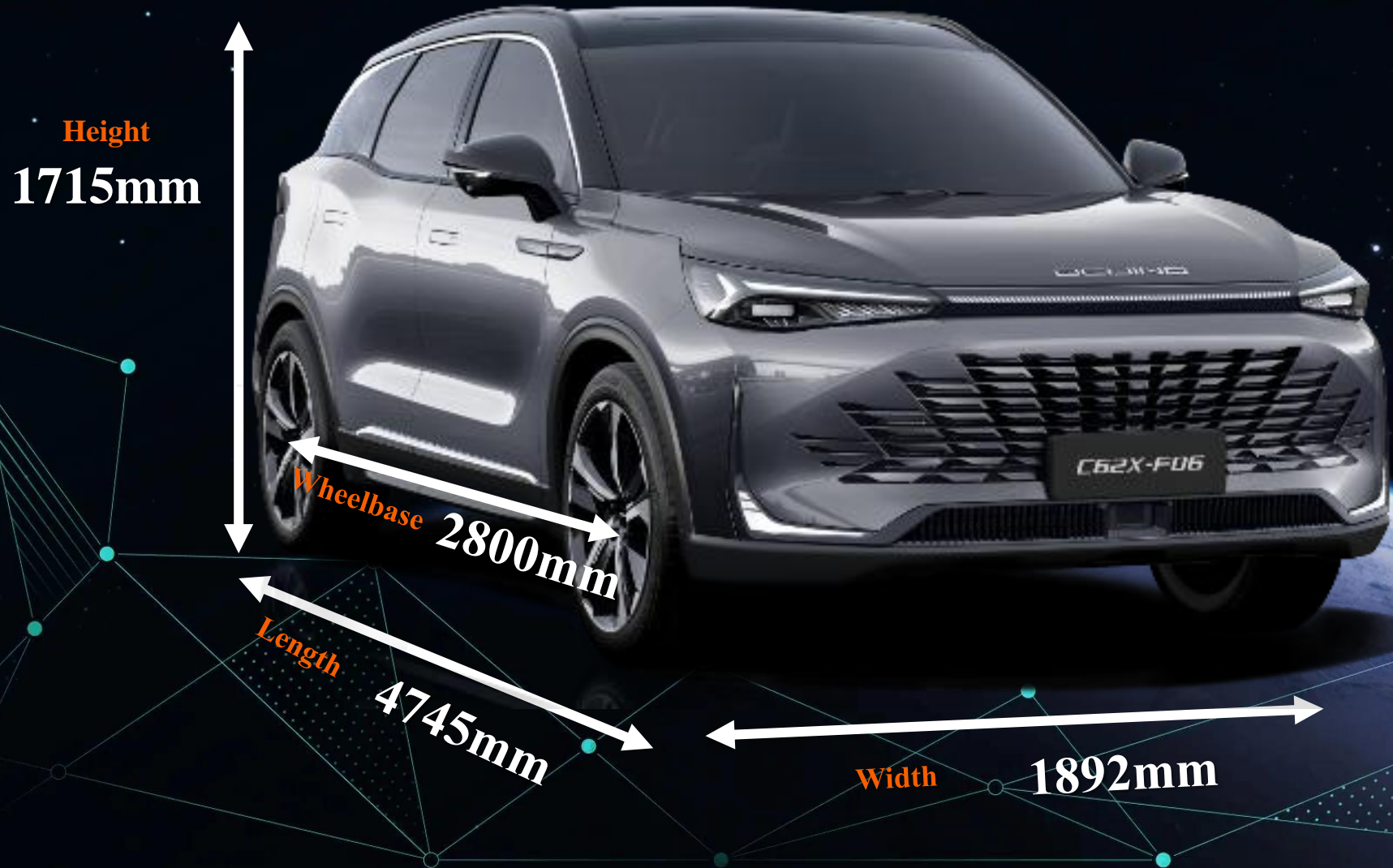




# Leading Size In The Same Level

BAIC

Large Size for Comfortable Sitting





# Appearance Colors

BAIC



JET BLACK



FLOW SILVER



JADE WHITE



PALACE RED



SILK GRAY

- Dual color
- Solid color





# Capital Beauty Design Theme

BAIC

Design Theme

## CAPITAL BEAUTY

INHERITANCE

MODERN





# Brand Design Strategy

## BAIC Design Strategy



CONFIDENT PURITY

WARM INTELLIGENCE

The brand conveys confidence and purity. The design embodies warmth and wisdom, fully enhancing the convenience and intelligence of product use.





# Kylin Wing Grille Design



## Upgrade of Language Aesthetics of Capital Style Design

Fashion pioneer, mix of tradition and modern design



Capital Style 3.0 Design Concept



Kylin Wing Design Theme

Kylin “Chinese Mythical Beast”



# Digital Lighting Matrix Design

BAIC

Front and rear penetrating lighting design provide high recognition



New Headlight Combination

Digital Lighting Matrix

Highly Recognizable Light Source Design

“L” Shape Daytime Running  
Light Design







# Pixel “BEIJING” Light Source Design



New Daytime Running Light Design: The middle part is designed to form a planar pixel segmentation with the same proportion as the logo, and the light is lit, forming a unique “BEIJING” brand recognition effect in the dark



# Kylin Wing Tail Light Design

BAIC



Kylin Wing Tail Light Design

New Light Up LOGO





# Capital Style Tail Design



**Dual Sides With Four Outlet Tail Throat Design**

**New Bumper Design**

**BAIC**



**Tail Gate Design Upgrade**



# Interior Design Concept

BAIC

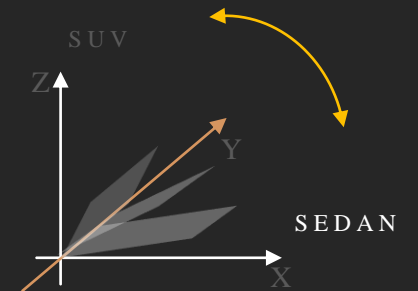
WARM EXPERIENCE

MODERN SIMPLICITY

INTELLIGENT LAYOUT

SUV

VOLUME POWER



Continuing the modern and simple design style of the RADIANCE concept car, Provide users with a technologically warm driving experience.

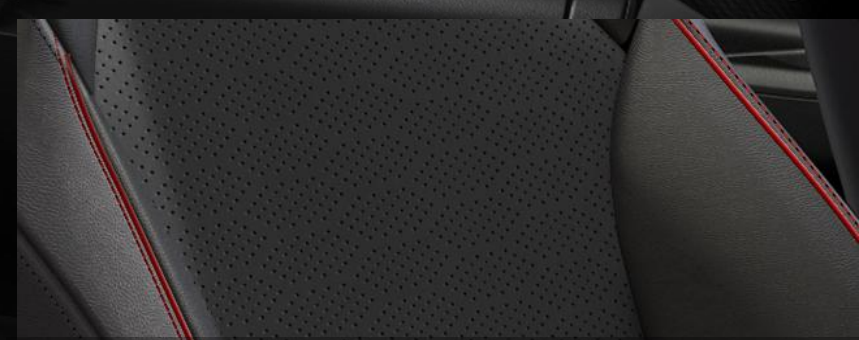




# Interior Color



Metal texture panel



Hexagon punching / Sporty piping

## Red and Black Interior

Color impact for a stylish atmosphere





# Interior Color

BAIC



Dual-layer garnish



Black brushed texture panel



3D quilting





# Embraced Cabin

BAIC

Comprehensive Upgrade Of Interior Design





# Penetrated Air Outlets



**Penetrated Design**

**High Air Output**

Exquisite design of the air outlets can make you feel the technological design while enjoying a comfortable temperature





# New Interaction Screens



7' Full LCD Instrument Panel



# Design Summary

BAIC

## Highlights

### Kylin Wing Grille

Fashion; the brand's upward meaning

### Digital Lighting Matrix Design

The new headlight design; the recognition of beijing brand

### Dual Sides With Four Outlet

### Tail Throat Design

Demonstrating the power of new X7,

### Wing-shaped Wheel Hub Design

Wing-shaped 19 inch aluminum alloy wheels;

### Red Black/Black Brown Interior Design

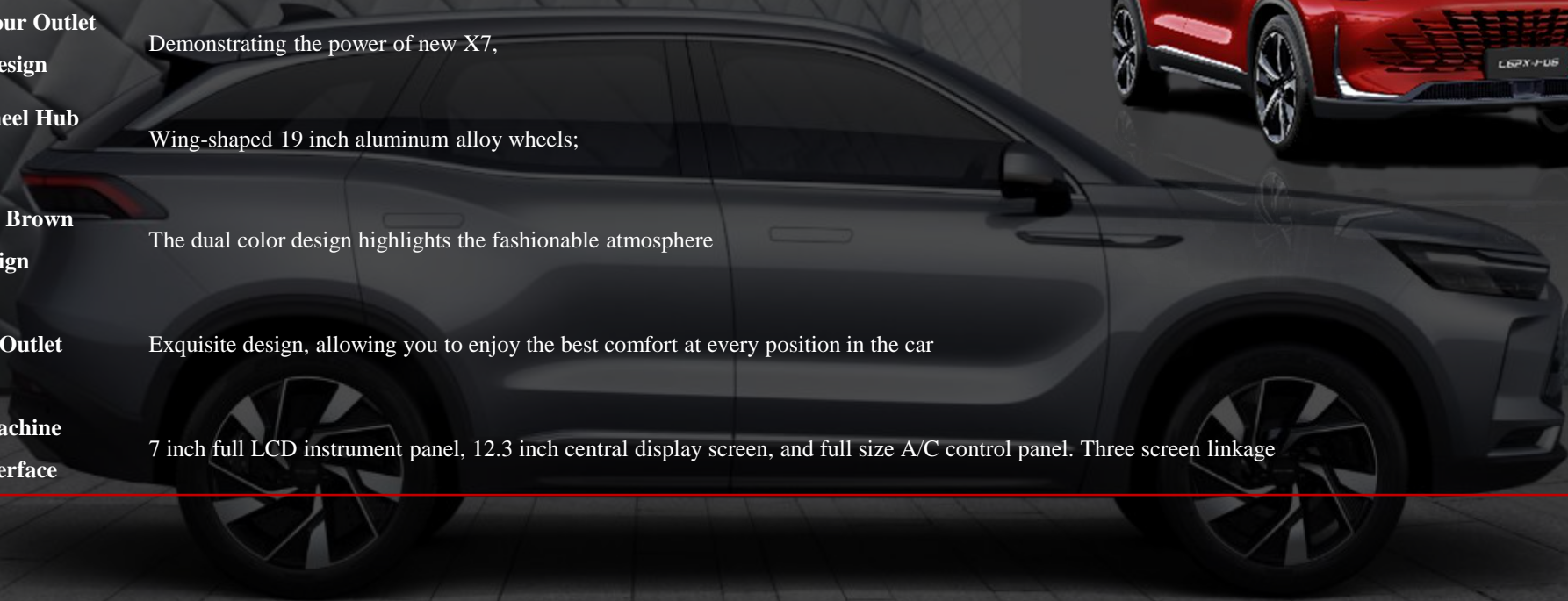
The dual color design highlights the fashionable atmosphere

### Penetrated Air Outlet

Exquisite design, allowing you to enjoy the best comfort at every position in the car

### New Human-machine Interaction Interface

7 inch full LCD instrument panel, 12.3 inch central display screen, and full size A/C control panel. Three screen linkage





Space







# Space Highlights

BAIC

## Primary Highlights

### Large Space To Create Pleasant Enjoyment

- The longest wheelbase in the same level 2800mm
- The larger size sunroof : 1.122m<sup>2</sup>
- Dual flat space
- Zero-gravity seat
- Front and rear seats with heating and ventilation function

## Secondary Highlights

### Comfortable Design, Comfortable To Use

- Unique massage seat in the same level
- Dual zone A/C
- The control buttons on the rear center armrest







# Leading In Massive Size



The Greatest Space In The Same Class, More Comfortable



Model	BAIC New X7	BAIC X7	CS75 PLUS	Tiggo 8 PLUS	H6 III	Jetour X70 PLUS	RX5 MAX	CS75	Geely Boyue L
Length	4745	4710	4700	4722	4653	4749	4670	4650	4670
Width	1892	1892	1865	1860	1886	1900	1875	1850	1900
Wheelbase	2800	2800	2710	2710	2738	2745	2760	2700	2777



# The Larger Size Panoramic Sunroof

BAIC

The Largest Light Transparent Area In The Same Vehicle Level

Model	BAIC New X7	BAIC X7	CS75 PLUS	H6 III	Geely Haoyue	RX5 MAX
Sunroof Size	1320*850 mm		1120*700mm	1170*700mm	1180*700mm	1160*720mm





# Automatic Window Close Function In Rainy Days

## Intelligent Window Close Function

**inalfa**  
roof systems

### Inalfa Brand Quality

World famous brand Netherlands Innafar (wholly owned by BHAP), supplier of BBA, Volvo, Volkswagen



### Intelligent Close Function

- Automatic close with rain drop sensing
- Automatic close when locked
- Automatic close at high speed





# Dual Flat Space

BAIC

## Comfortable riding experience



Model	BAIC New X7	BAIC X7	CS75 PLUS	Tiggo8 PLUS	H6	Jetour X70 PLUS	RX5 MAX
Rear floor fully flat	Yes	Yes	Yes	No	Yes	Yes	Yes
Rear seat fold down fully flat	Yes	Yes	Yes	No	No	No	No





# Mobile Phone Wireless Charger

BAIC

- USB & Type-C charging port

- Rear row charging ports

## Wireless Charging

- Convenient Charging
- Get rid of low battery anxiety
- Get rid of tangled charging cables troubles
- Available for Luxury & Exclusive spec



# Comfortable Design For Versatile Storage Space



## User-friendly design and maximized space utilization

Armrest Box Variable Storage



Dual Layers Trunk Switching



Floating center console



Door Inner Panel Umbrella Storage



28 Storage Spaces Throughout The Vehicle



Model	BAIC New X7	BAIC X7	CS75 PLUS	Tiggo8 PLUS	H6 III
Armrest Box Variable Storage	Yes	Yes	No	Yes	No
Floating Auxiliary Instrument Panel	Yes	Yes	Yes	Yes	Yes
Dual Layers Trunk Switching	Yes	Yes	Yes	No	No
Door Inner Panel Umbrella Storage	Yes	Yes	No	No	No





# Full Function And User-Friendly Design

BAIC



Zero-gravity Seat



Steering Wheel & Front And  
Rear Seats  
Ventilation & Heating



Front And Rear Seats  
Massage



Rear Row Armrest Console





# Full Function And User-Friendly Design

BAIC

2 Controls, 3\*3 Massage, 3+3 Ventilation And Heating

Leading Technology

Premium Experience

User-Friendly Design

Easy Operation

Accurate Positioning

Model	Driver	Passenger Seat	Rear Row
BEIJING New X7	lumbar support, massage, ventilation, heating	electric leg support, Lumbar support, massage, ventilation, heating	massage, ventilation, heating
CS75 PLUS II	No	No	No
Tiggo8 PLUS	No	No	No
Geely Haoyue	No	No	No





# Zero-gravity Passenger Seat

**Comfort And Relaxation After A Busy Day With The Leg Rest Raised  
(Leg Rest Adjustable Angel Up To 50°)**

## Electrical Design

Multiple electric adjustment functions are designed to allow for personalized seating preferences.

## Leg Rest Design

The electric leg rest is designed to upgrade the overall comfort



# Front And Rear Seat Ventilation And Heating



## Seat Ventilation

Seat ventilation brings cool breeze on hot summer days

## Seat Heating

The seats heating bring you warm in the cold winter, so you can never fear the coldness.

## Intelligent Screen A/C Controls

Ventilation/heating can be operated via front touchscreen buttons and rear-row physical switches

**10 Minutes to Cool Down Nearly 20°C**

**5 Minutes To Heat Up 25°C**







# 8-point Massage System For Front And Rear Seats

## The A Class-leading Massage System

Comfortable ride both in the front and back

Wave Mode



Crossover Mode



Catwalk Mode



## Intelligent screen A/C Controls And Rear-row Armrest Switch

### 8-point Massage System

Eight-point massage system for 4 seats left and right sides

### Three Massage Modes And Levels

Each seat has 3 massage modes and can provide 3 massage levels





# Comprehensive Air Purification Function



A wide range of A/C options to meet the customers' different comfortable needs.

Self-Drying

Pre-Ventilation

Automatic A/C Comfort Options

One-Touch Cooling

One-Touch Heating

Negative Ion Generator

AQS (Air Quality System)





# Large Space Highlights

BAIC

## Configuration Highlights

## Synopsis

### 2800mm Wheelbase

Longest wheelbase in its class, giving spacious interior

### 'Giant Screen' Sunroof

The largest sunroof size in its class, with the largest area and maximum light transmission

### Dual Flat Space

Double flat space for a comfortable ride. With the seats down, you can fit even more items with ease.

### Storage Space

Multi versatile storage space

### Zero-gravity Passenger Seat

The maximum adjustable 50° leg rest allows the 'Queen' to enjoy comfortable journey home after a busy day.

### Ergonomic Seating

2 control modes, 3\*3 mode/intensity adjustment. 2+3 ventilation and heating.

### Intelligent Dual-Zone Air Conditioning

Enjoy the comfort, freshness and gentle temperature.







# Intelligence





# Intelligence Highlights

BAIC

## Primary Highlights

Intelligent Car Cabin With Intelligent Technology At Your Fingertips

- Intelligent Driving Assistance System
- Smooth Connection, Communication Without Boundaries
- Audio System

## Secondary Highlights

Intelligent Technology Features For Super Safety

- Electric Tailgate
- Automatic Parking, Save Your Mind And Convenience





# Adaptive Cruise Control (ACC)

**Intelligent Following At Preset Speeds And Automatic Switching Target  
Truly Free Your Feet And Enjoy The Freedom Of Driving**



**Around Vehicle Monitoring**

**Front Camera**

**Front Distance Display**

**Millimeter-wave Radar**

**0-150km Full Speed Intelligent Cruise Control (Stop-go Function Available)**







# High-Beam Assist (HMA)

BAIC

Automatic Switch High and Low Beam to Enhance Driving Safety

Sensor System Detects Vehicles Ahead And  
Calculates Distance

Switch For High Or Low Beam





# Lane Departure Warning (LDW)



Reducing Traffic Accidents Due To Lane Departure

**LDW Land Departure Warning**

- Clearly visible road markings
- Visual & Audio Warning

**Speed Range:  $\geq 60\text{Km/h}$**





# Blind Spot Detection (BSD)

BAIC

## Reduce Traffic Accidents Due To Driving Blind Spots

Detects blind zones on either side of the rear of the vehicle. When other vehicles enter the driver's blind spot, the side mirrors will provide a **light indication and emit a beep to alert the driver.**



### BSD Blind Spot Detection

- Radar detecting blind spot behind after engine start
- Object approaching within 10m behind the rearview mirror for yellow light flash
- If turn on signal light, object approaching from corresponding side for red light flash and buzzer warning



# Integrated Cruise Assist (ICA)

BAIC

Intelligent following and lane center keeping to reduce driver workload



Adopted the same shifter design as Mercedes.

## TJA Traffic Jam Assist

- When lane lines are visible, the TJA keeps the vehicle in the centre lane
- When lane lines are not visible, the TJA follows the lateral movement of the vehicle ahead
- In merging situations, the TJA gently reduces control torque

**Speed Range: 0~60Km/h**

## ICA Integrated Cruise Control

- ICA centres the vehicle in the lane when the lane lines are visible
- ICA withdraws lateral assist when lane lines are not visible
- ICA gently reduces control torque in merging situations
- Automatic deceleration in turning

**Speed Range: 60~150Km/h**

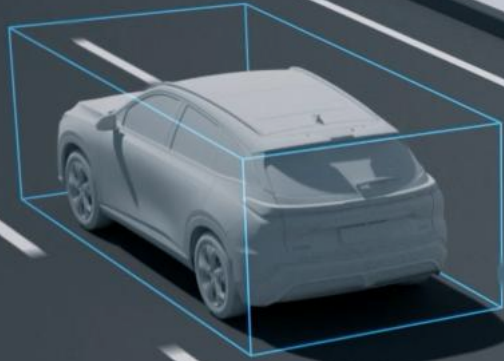
\*Illustrated, not actual car photos





# Forward Collision Warning(FCW)

Helps Drivers Maintain A Safe Distance From The Vehicle In Front Of Them



## FCW Forward Collision Warning

Stage 1: Monitoring of the vehicle in front

Stage 2: Too close to the vehicle in front

Stage 3: When there is a risk of collision

Speed Range: >40Km/h







# Automatic Emergency Braking (AEB)



## Safety Control, No More Tailgating

Identifies pedestrians or vehicles in front of the vehicle, **issues an alarm if there is a risk of collision and actively applies braking force** to significantly reduce the speed of the vehicle, buying the driver more reaction time to prevent a collision or mitigate the injuries caused by a collision.

### Emergency Brake

### Pedestrians In Blind Spots

- Wider range of effective operating speeds
- Identifies stationary vehicles and has a speed range of 5-60km/h
- Up to 20km/h higher than the average competitor

Recognises Objects Such As Vehicles, Pedestrians And Bicycles





# Lane Keeping Assist (LKA)

BAIC

Provides Steering Control For The Driver And Keeps  
The Vehicle In Its Lane



Start-up Speed Range: **1-150km/H;**

**1-60km/H** To Maintain Lane Centre Without IACC On

\*\*Driving assistance only, please keep the driver active and safe at all times

\*Illustrated, not actual car photos

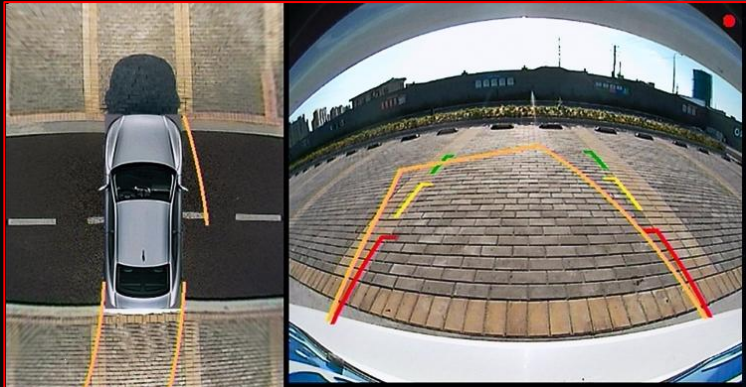




# 360° Around View Monitor (AVM)

BAIC

Panoramic image monitoring for safer and more secure parking

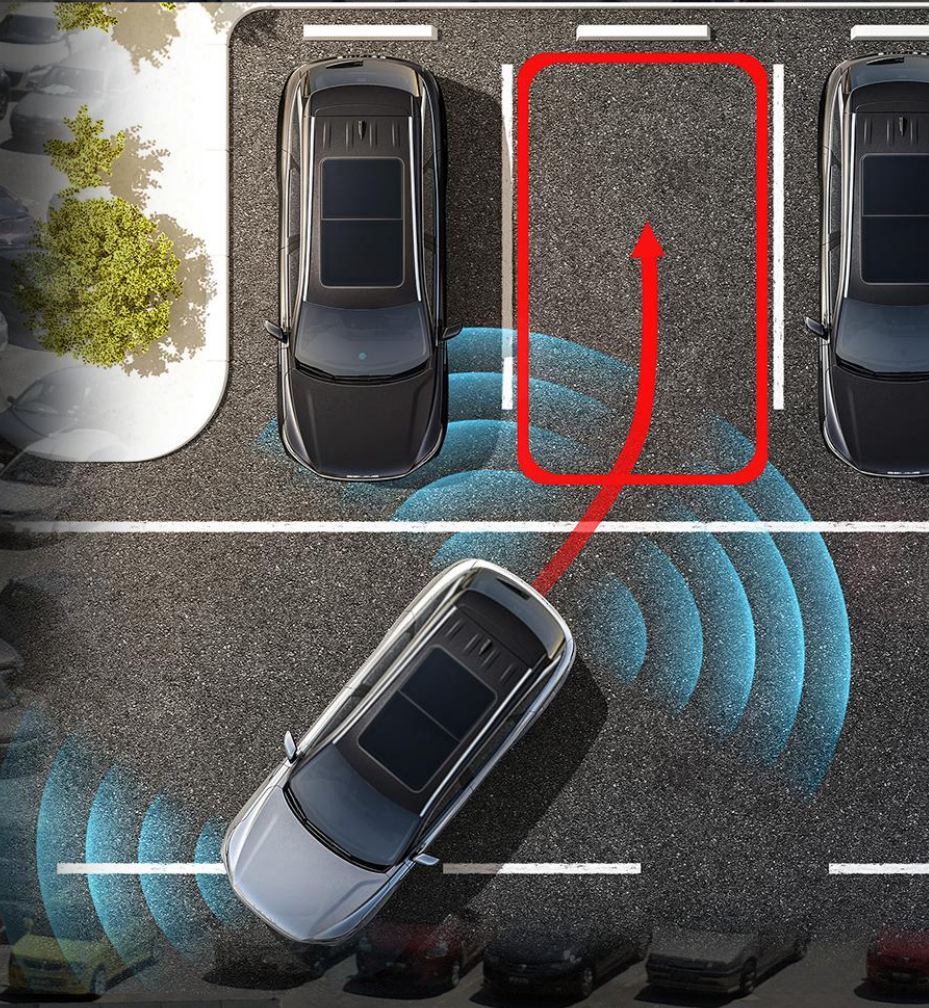






# Automatic Parking Assist (APA)

BAIC



APA  
Fully automatic parking





# Hill Hold Control (HHC)

Prevents The Vehicle From Slipping, Improving Driving Safety When Starting On Hills

## Hill Hold Control (HHC)

Operating conditions for HAC Hill Assist:

The gearshift is not in position p, the driver has not depressed the accelerator pedal, the vehicle is slipping backwards (or the brake pedal is lightly depressed) and the parking brake (handbrake) is not applied.

When these conditions are met, the driver depresses the brake pedal deeply (if the driver has already depressed the brake pedal deeply to begin with, the braking force must be reduced slightly), the anti-skid light comes on and the buzzer is heard to prove that the function has been activated.





# Hill Descent Control (HDC)



Automatically Controlled Speed  
To Prevent Accident







# Auto Hold (EPB)

No More Manual Handbrake

## Auto Hold

This function could save the using of handbrake when waiting for traffic lights so that no need to over-switch shift lever.





# Intelligent Tire Pressure Display

BAIC

## Reliable Digital Display

### Intelligent Tire Pressure Display

- Prevent accidents
- Extend tire service life
- Make driving more economical
- Reducing wear and tear on the suspension system





# Welcome Mode



## Various Welcome Modes

Enjoy Premium Experience



Dynamic lights on



Dynamic Ambience Lights



Seats Welcome Mode





# Dynamic Ambience Lights

BAIC

## A Show Of Light

64-Colour Ambience Lights Cabin

Breathing Mode

Dancing With Speed

Door Open Warning

Dancing With Music

Dancing With Temperature



# Seats Welcome Mode

BAIC

## When You Are Approaching...

Invisible door handle automatically pops open, the seat actively moves back and the ambience light comes on after opening the door, and automatically adjusts to your set position after sitting down.





# Powertrain



# Powertrain Highlights

BAIC

## Primary Highlights

### Dual Top-10 Powertrain Combination

- Jointly developed by China and Germany, 1.5T China Heart Top Ten engine, 138kW, 305N·m
- The world's top ten gearboxes of Longpan Cup, millisecond shift experience.
- Excellent NVH performance
- 40000h+Duration testing

## Secondary Highlights

- 100km acceleration 9.87s
- Fuel consumption 7.39L per 100km







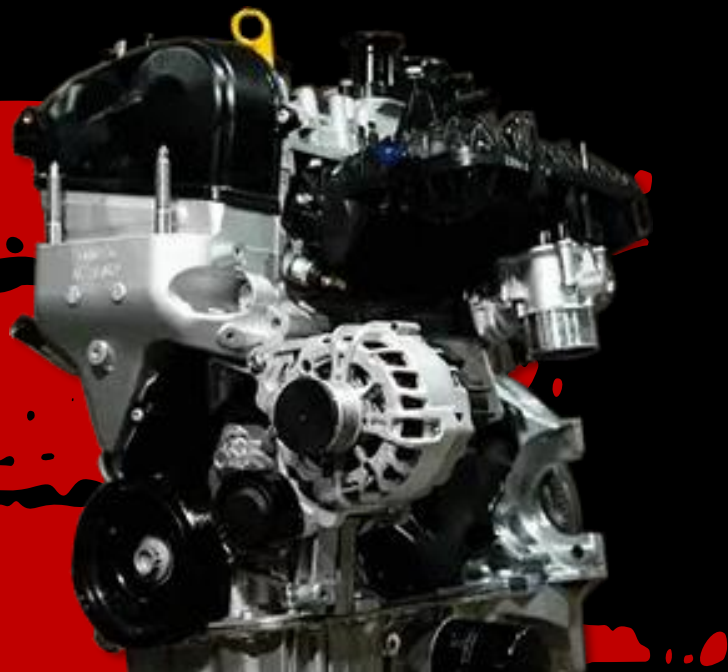
# 1.5T Engine

BAIC

## China Top 10 Engine

Jointly developed By BAIC And German Meta

39.2% Thermal Efficiency



High-flow VGT  
Supercharger

Miller Circulation

350 Bar High-pressure  
Injection

21 Noise Reduction Black  
Technology

Green Emission  
Technology

Fast Warm-up Technology

Model	BAIC New X7	CS75 PLUS	Geely Boyue	Tiggo 8 PLUS	MG one	Haval H6 2021
Displacement	1.5T	1.5T	1.8T	1.6T	1.5T	1.5T
Maximum Engine Power	138kW	138kW	135kW	145kW	133kW	124kW
Maximum Engine Torque	305N·m	300N·m	300N·m	290N·m	285N·m	285N·m

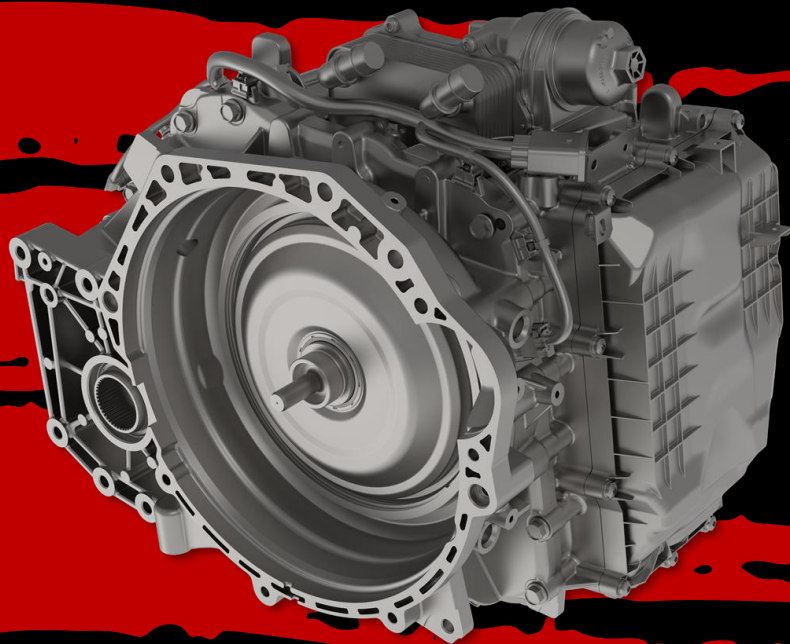


# DCT 380 Transmission



**China Top 10 Transmission**

**Delivering millisecond shift experience**



**Golden Powertrain**

**High Performance Synchronizer**

**High Efficiency Double Pump  
System**

**Bistable Electronic Gearshift**

**A More Stable, Accurate, Reliable Top 10 Transmission**



02



# DCT 380 Transmission

BAIC

Golden Tuning

Smoother

Perfect Matching Between Engine And Transmission

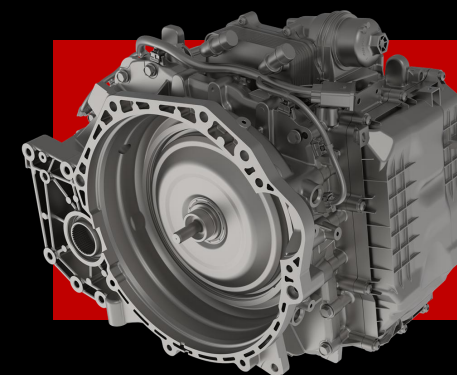


1.5T Engine

**138kW** Maximum Power  
**305N·m** Maximum Torque



DCT 380 Transmission



Maximum Input Torque **380N·m**  
Maximum Output Torque **5400N·m**

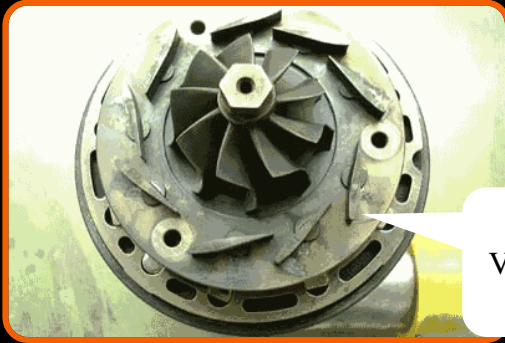


# 1.5T Engine



## Variable Geometry Turbocharger (VGT)

**The Industry's First Mass Production** Equipped With VGT Turbocharger Technology, Is No Longer Exclusive To Supercars



Variable cross section

**43% Improvement In Low-speed Dynamic Response Time**

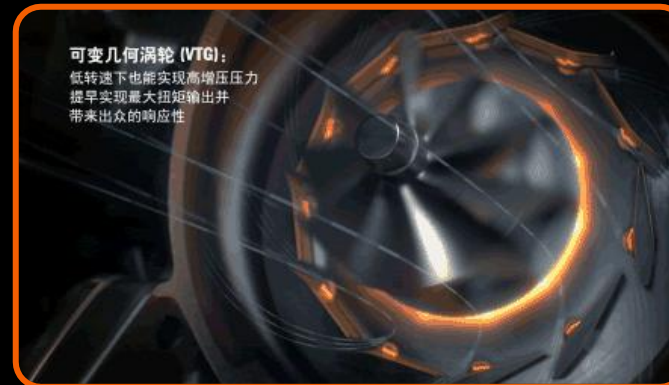
- The engine achieves a maximum torque of 305 N·m at 1500 rpm
- 1500-4250 full speed range engine



Reduced cross-section at low rpm to increase exhaust gas flow rate, resulting in higher turbo speed and higher boost efficiency



Increase cross-section at high speed to reduce exhaust resistance and obtain greater power output efficiency



VGT type Turbocharger is also equipped on Porsche 911







# 1.5T Engine

BAIC

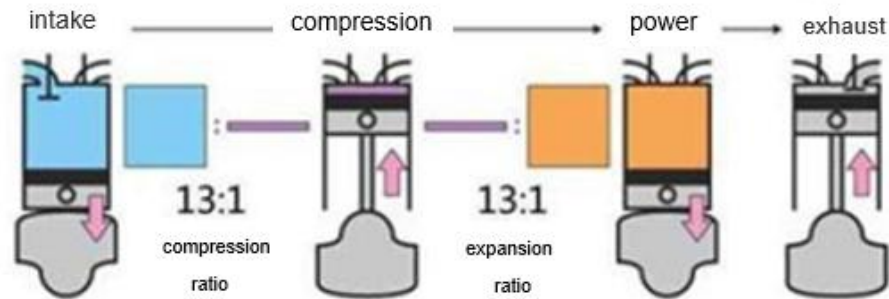
## Miller Circulation

Complementary Advantages Of Miller Cycle And VGT Supercharger Technology, **Fuel Saving Of WLTC Cycle For The Whole Vehicle >4.5%**

Use Less Fuel To Do The Same Work

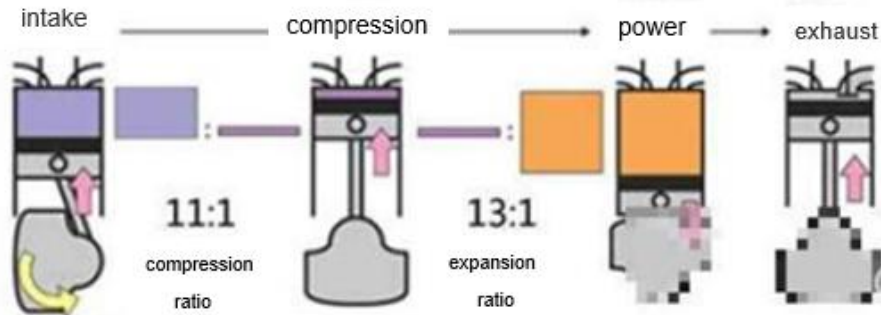
### Otto Cycle

compression ratio=expansion ratio



### Miller Cycle

compression ratio<expansion ratio



Volkswagen's latest EA211 1.5T EVO engine is also powered by VGT + Miller Circulation technology

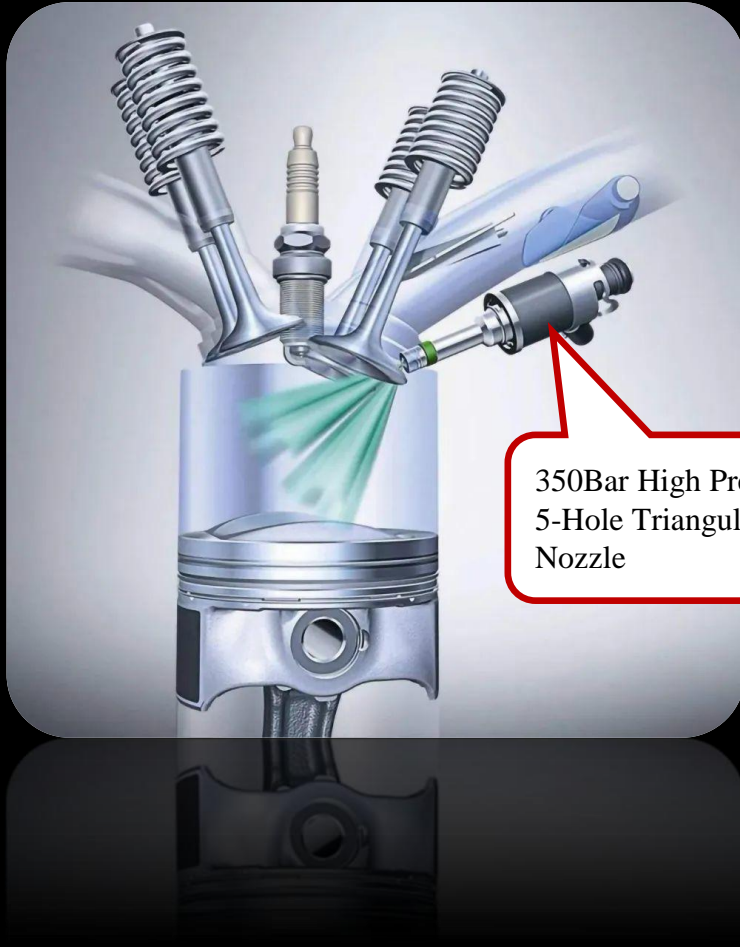




# 1.5T Engine

BAIC

## 350Bar High-pressure Injection



350Bar High Pressure  
5-Hole Triangular  
Nozzle

### 350Bar High Pressure

- Higher injection pressure makes gas fully mixed combustion, releasing more energy.

### 5-Hole Triangular Nozzle

- Larger atomization area than conventional single-hole and three-hole nozzles





# 1.5T Engine



## 21 Noise Reduction Black Technology

Break NVH record, perfect idle noise dealing technology among A class Vehicles



**Engine Idle Noise Only 57.5db**

- Smart Variable Displacement Oil Pump
- High Efficiency Engine Coolant Pump
- Smart Engine Generator
- DLC(Diamond-like Carbon) Coated Piston Rings
- Low Viscosity Engine Oil
- Crankshaft Offset





# Ultra-Long Durability Test

BAIC

40,000hrs+ Testing

**Over 40000 hours** All Terrain Rigorous Tests Builds The Best Quality



## -40°C Ultra Cold Environment In Hailar

- Hailar is located in the northernmost part of China, where the temperature can reach -58 degrees.

## 50°C Fire Mountain

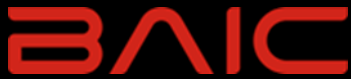
- Tested in Turpan, the hottest city in China, with a maximum surface temperature of 89 degrees







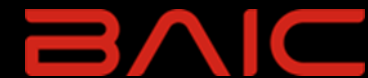
# 100km Acceleration 9.87s



Parameter Comparison			
Dynamic parameters indicators	BEIJING New X7	BAIC X7	CS75 Plus
		Test value	Test value
100km Acceleration	9.87	10.90	10.78
30-70km/h Acceleration	3.89	4.08	4.29
60-100km/h Acceleration	5.3	5.68	5.3
80-120km/h Acceleration	6.72	7.97	6.6

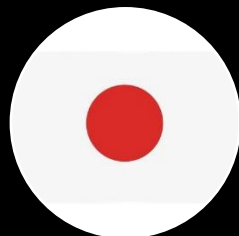


WLTC 7.39



# World Light Vehicle Test Cycle (WLTC) Fuel Consumption

New Unified Fuel Consumption Standards For The World's Major Automotive Powers



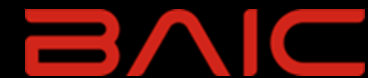
Parameter Combination

Index	BELJING New X7	BAIC X7	CS75 Plus
WLTC	7.39	7.7	-
60km/h fuel consumption	4.46	5	4.89
90km/h fuel consumption	5.67	6.4	5.86
120km/h fuel consumption	8.26	9	8.34





# Summary



## Comparison To BAIC X7

Product Improvements	BAIC New X7	BAIC X7
New Kylin Design	●	×
Palace Red	●	×
19-inch Wheel	●	×
Vehicle Length +35mm	●	×
Zero-gravity Passenger Seat	●	×
Quilted Seats	●	×
Colorful Material Improvement	●	×
Infotainment Upgrade (Hardware & Software)	●	×
Dual Top 10 Powertrain	●	×
VGT Turbocharger	●	×
NVH Performance Enhancement	●	×

## Comparison To Competitors

BAIC New X7 Unique Product Features	
-------------------------------------	--

2800mm Super Large Wheelbase	The Largest Panoramic Sunroof In The Same Level
Zero-gravity Passenger Seat	Front/Rear Seats Ventilation/Heating/Message
Dual Top 10 powertrain	Multi ADAS function
VGT Turbocharger	40000 hrs+ Testing



BAIC

THANK YOU



BAIC New X7  
Product Introduction